

**TaylorMade
Solutions**
are welcome!

wittig

Capacitor Holder

Capacitor Spacer

Capacitor Washer

Capacitor Insulation

Capacitor Accessories

Capacitor Clamps & Nuts

Latest Version



www.wittig-electronic.de

Product Guide

[Capacitor Holder](#) [Page 1~9](#)

[Capacitor Spacer](#) [Page 10~11](#)

[Capacitor Washer](#) [Page 12~17](#)

[Capacitor Insulation](#) [Page 18~24](#)

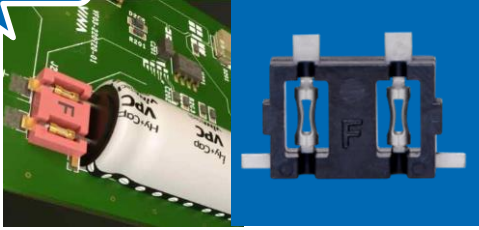
[Capacitor Accessories](#) [Page 25~27](#)

[Capacitor Clamps & Nuts](#) [Page 28~32](#)



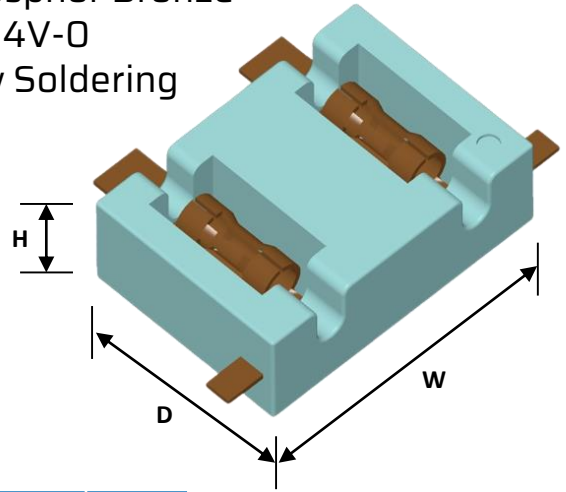
Capacitor Holder

NEW
2023



Lithium-CAP Holder Ø8 ~ 12,5

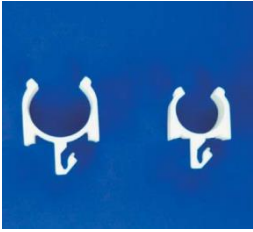
Material: LCP473i +
Sn Plated Phosphor Bronze
Flame class: 94V-0
Fixing: Reflow Soldering



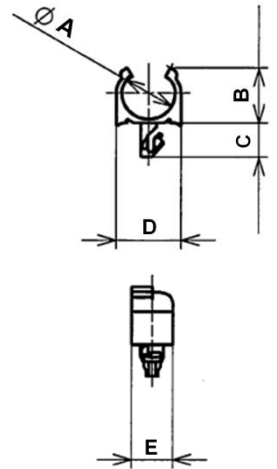
Part No.	Pitch	W	D	H
90F10216	3.5	8.8	6.3	3.0
90F10217	5.0	11.4	6.3	3.0

Capacitor Holder

E-CAP Holder Ø6.3 ~ 8



Material: Nylon66
Flame class: 94V-0
Color: Natural



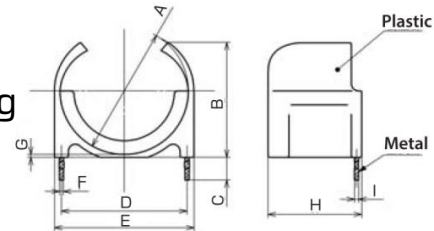
Part No.	A	B	C	D	E
90F10128	Ø6.5	6.7	4.1	7.8	5.0
NRND 90F10144	Ø8.2	8.3	4.3	9.5	5.0

NRND

E-CAP Holder Ø12.5 ~ 18



Material: Nylon66 + Steel
Flame class: 94V-0
Color: Natural
Fixing: Wave Soldering

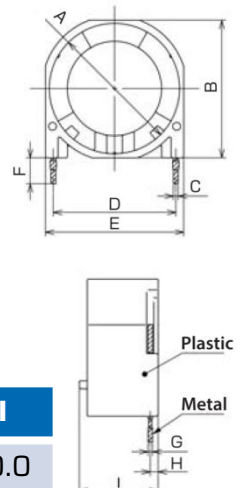


Part No.	A	B	C	D	E	F	G	H	I
90F10124	Ø13.0	12.0	3.3	12.2	14.2	0.6	0.4	13.5	0.6
90F10143	Ø16.5	15.4	3.3	15.6	17.9	0.6	0.4	13.5	0.6
90F10125	Ø18.5	16.7	3.3	18.1	20.1	0.6	0.4	13.5	0.6

E-CAP Holder Ø16



Material: Nylon66 + Steel
Flame class: 94V-0
Color: Natural
Fixing: Wave Soldering



Part No.	A	B	C	D	E	F	G	H	I
90F10126	Ø16.6	17.5	0.6	15.6	17.6	3.3	0.6	1.0	10.0

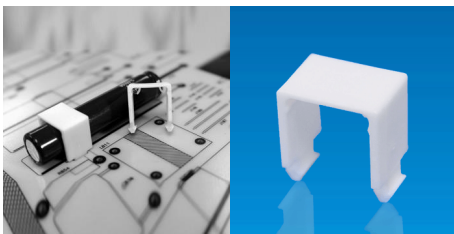
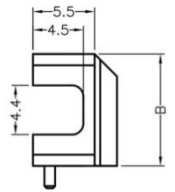
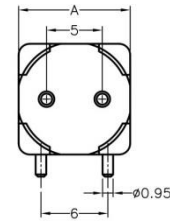
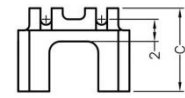
Capacitor Holder



E-CAP Holder Ø10

Material: Nylon66
 Flame class: 94V-0/ 94V-2
 Color: Natural/ Black

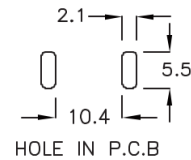
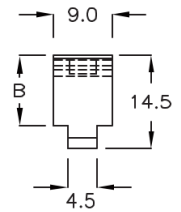
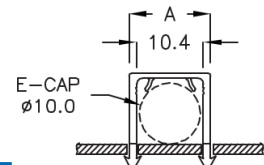
Part No.	A	B	C
<u>90F10122</u>	10.0	10.0	7.5



E-CAP Holder Ø10

Material: Nylon66
 Flame class: 94V-0
 Color: Natural

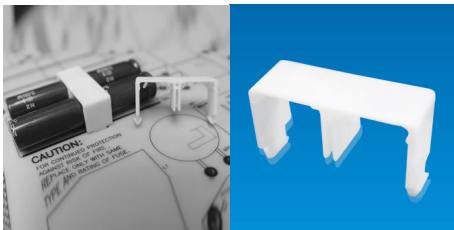
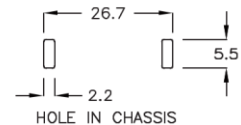
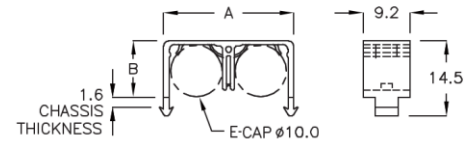
Part No.	A	B
ECH-001	12.7	10.9



E-CAP Holder 2x Ø10

Material: Nylon66
 Flame class: 94V-0
 Color: Natural

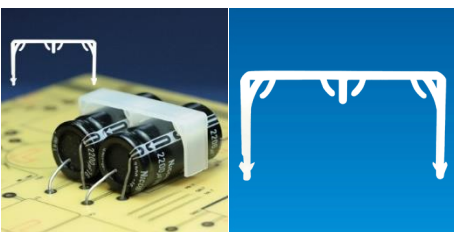
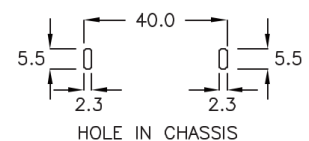
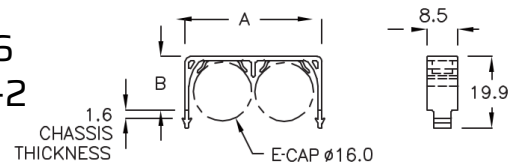
Part No.	A	B
ECH-002	25.2	10.9



E-CAP Holder 2x Ø16

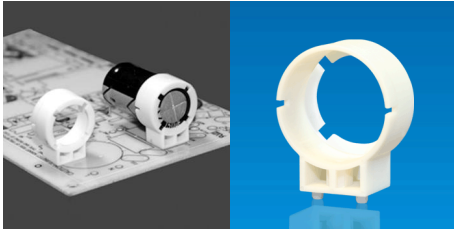
Material: Nylon66
 Flame class: 94V-2
 Color: Natural

Part No.	A	B
ECH-003	38.0	15.3

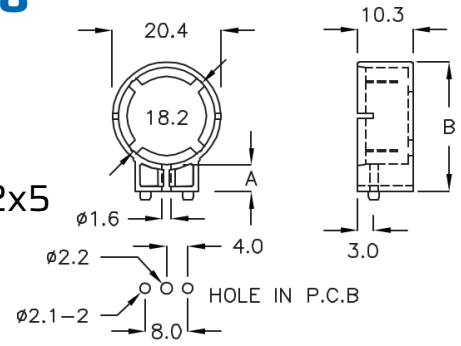


Capacitor Holder

E-CAP Holder Ø18

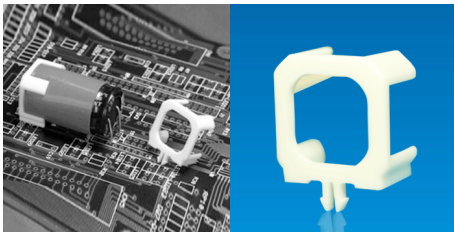


Material: Nylon66
 Flame class: 94V-2
 Color: Natural
 Fixing: f.e. Screw M2x5

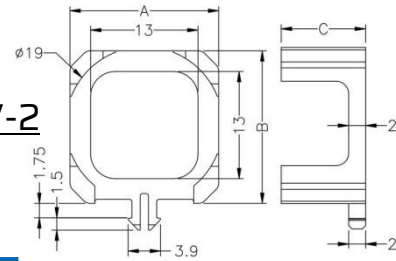


Part No.	A	B
ECH-004	5.0	24.4

E-CAP Holder Ø18



Material: Nylon66
 Flame class: 94V-0/ 94V-2
 Color: Natural/ Black

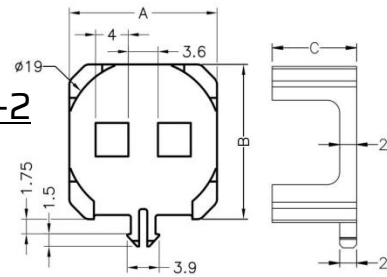


Part No.	A	B	C
<u>90F10114</u>	18.0	18.5	10.0

E-CAP Holder Ø18



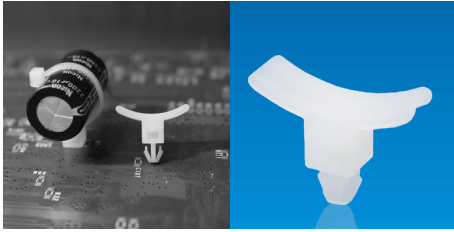
Material: Nylon66
 Flame class: 94V-0/ 94V-2
 Color: Natural/ Black



Part No.	A	B	C
<u>90F10111</u>	18.0	18.5	10.0

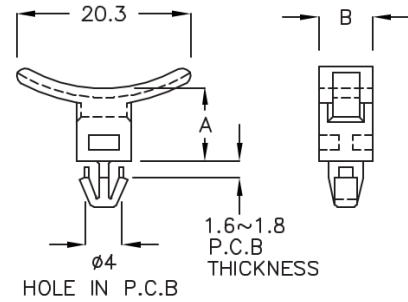
Capacitor Holder

E-CAP Holder



Material: Nylon66
 Flame class: 94V-2
 Color: Natural

Part No.	A	B
ECH-007	8.0	6.0

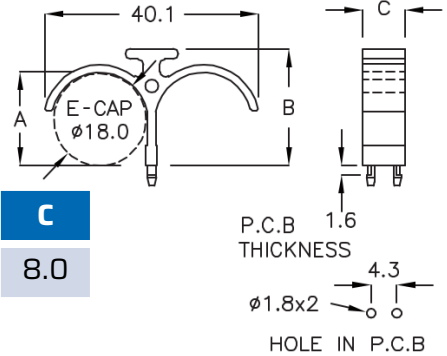


E-CAP Holder 2x Ø18

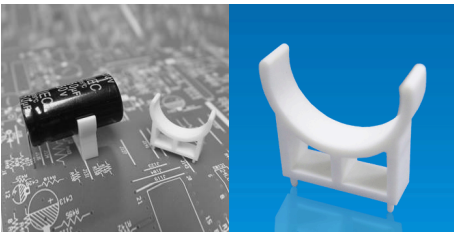


Material: Nylon66
 Flame class: 94V-0
 Color: Natural

Part No.	A	B	C
ECH-008	17.8	22.0	8.0

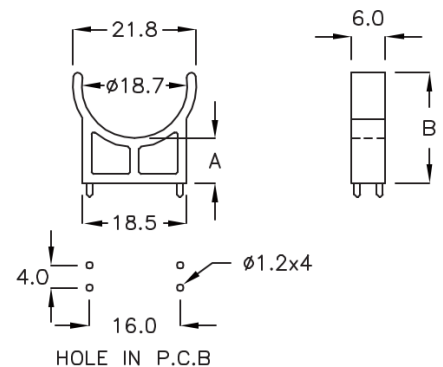


E-CAP Holder Ø18



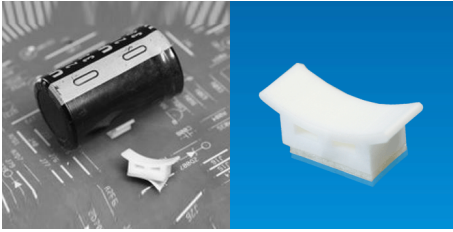
Material: Nylon66
 Flame class: 94V-0
 Color: Natural

Part No.	A	B
ECH-009	8.0	19.7



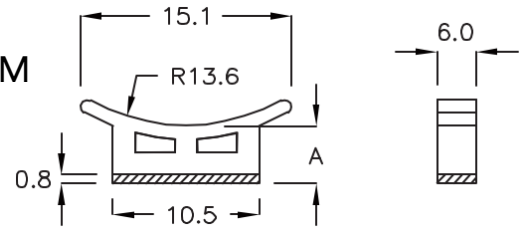
Capacitor Holder

E-CAP Holder

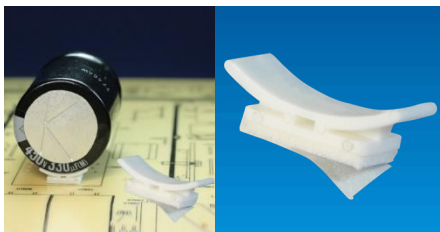


Material: Nylon66
 Flame class: 94V-2
 Color: Natural
 Adhesive Tape: 3M

Part No.	A
ECH-010	8.0

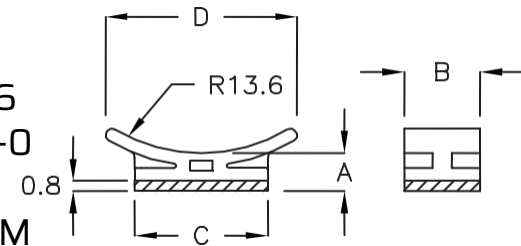


E-CAP Holder



Material: Nylon66
 Flame class: 94V-0
 Color: Natural
 Adhesive Tape: 3M

Part No.	A	B	C	D
ECH-011	3.0	6.0	10.5	15.1
ECH-023	3.0	5.0	10.0	15.1
ECH-024	3.0	6.0	10.5	12.0

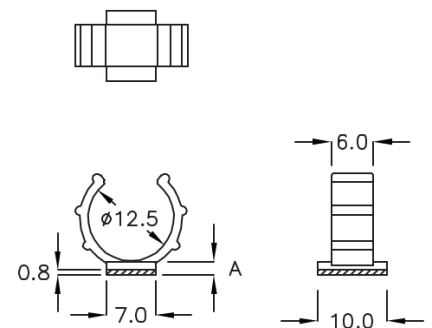


E-CAP Holder

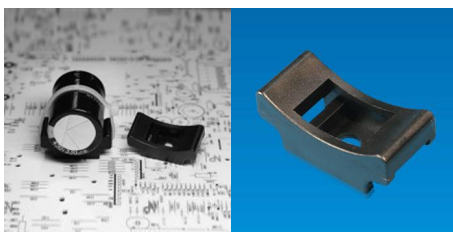


Material: Nylon66
 Flame class: 94V-2
 Color: Natural
 Adhesive Tape: 3M

Part No.	A
ECH-012	2.0

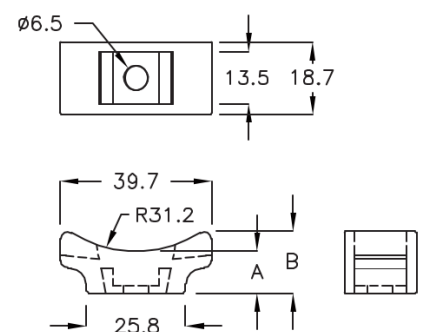


E-CAP Holder



Material: Nylon66
 Flame class: 94V-2
 Color: Black

Part No.	A	B
ECH-013	10.8	16.0



Capacitor Holder

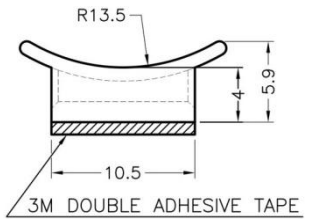
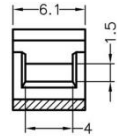


E-CAP Holder

Material: Nylon66
Flame class: 94V-0
Color: Natural/ Black
Adhesive Tape: 3M

Part No.

ECH-014

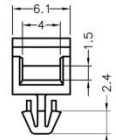


E-CAP Holder

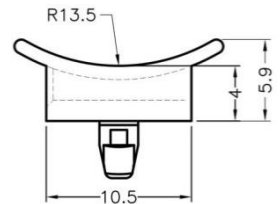
Material: Nylon66
Flame class: 94V-0
Color: Natural/ Black
Fixing: Snap-in

Part No.

ECH-015



MOUNTING HOLE : $\phi 3.0$
THICKNESS : 1.6

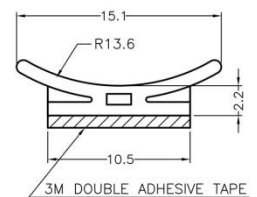


E-CAP Holder

Material: Nylon66
Flame class: 94V-0
Color: Natural/ Black
Adhesive Tape: 3M

Part No.

ECH-016

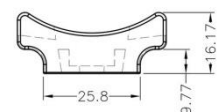
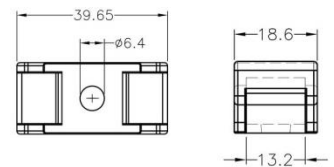


E-CAP Holder

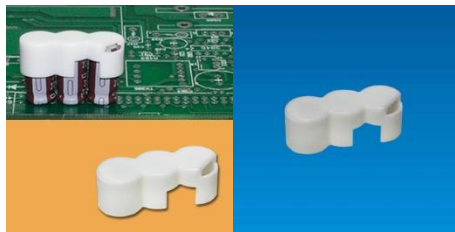
Material: Nylon66
Flame class: 94V-0
Color: Natural/ Black

Part No.

ECH-017



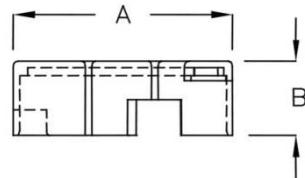
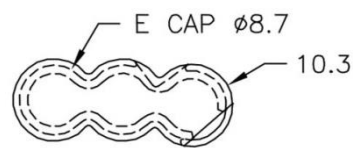
Capacitor Holder



E-CAP Holder 3x Ø8

Material: Nylon66
Flame class: 94V-0
Color: Natural

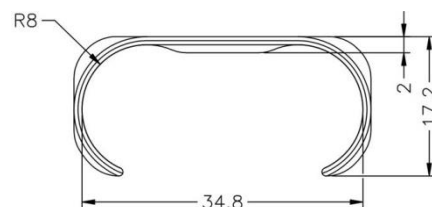
Part No.	A	B
ECH-018	27.45	9.3



E-CAP Clamp 2x Ø16

Material: Nylon66
Flame class: 94V-0
Color: Natural

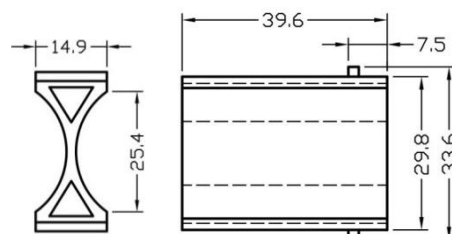
Part No.
ECH-019



E-CAP Holder 2x Ø25,4

Material: ABS
Flame class: 94HB
Color: Gray

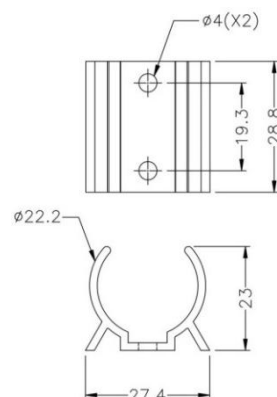
Part No.
ECH-020



E-CAP Holder Ø22

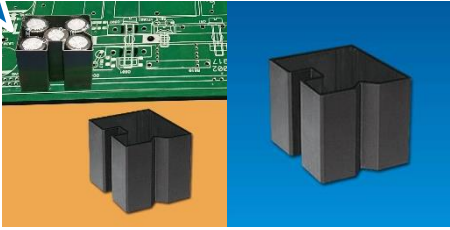
Material: Nylon66
Flame class: 94V-0
Color: Natural/ Black

Part No.
ECH-021



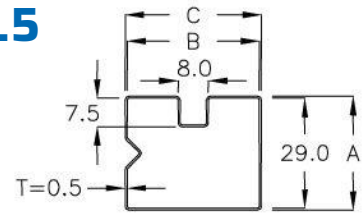
Capacitor Holder

NEW
2020



E-CAP Holder 5x Ø12.5

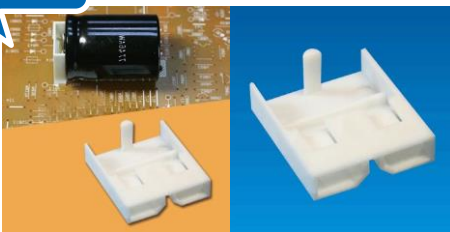
Material: Nylon66
Flame class: 94V-0
Color: Black



Part No.	A	B	C	D
ECH-022	30.0	35.0	36.0	27.5

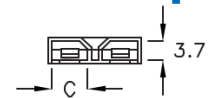


NEW
2020

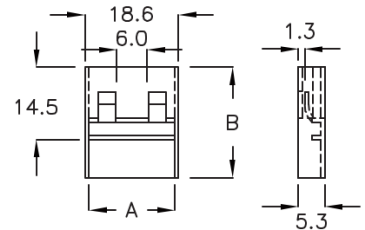


E-CAP Holder & Insulator Snapin

Material: Nylon66
Flame class: 94V-0
Color: Natural



Part No.	A	B	C
ECH-025	17.0	22.0	6.0



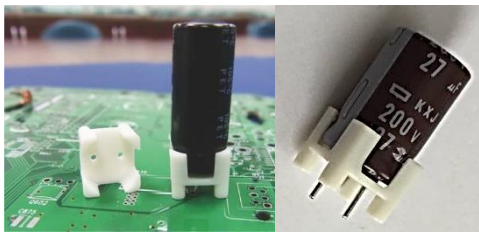
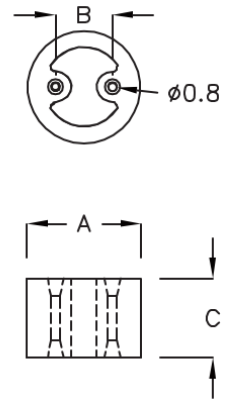
Capacitor Spacer



E-CAP Spacer p.5

Material: Nylon66
Flame class: 94V-2
Color: Black

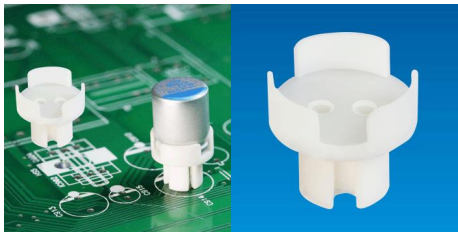
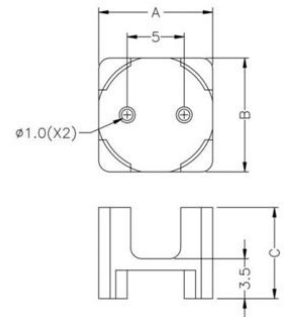
Part No.	A	B	C
ECS-001	Ø10.0	5.0	7.0



E-CAP Spacer p.5

Material: Nylon66
Flame class: 94V-0/ 94V-2
Color: Natural/ Black

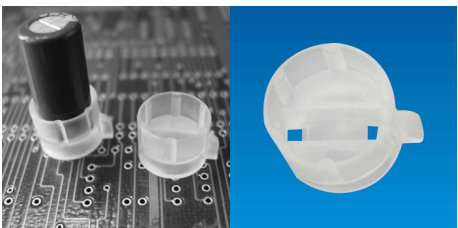
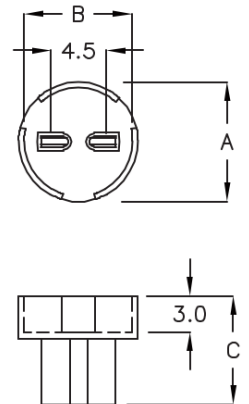
Part No.	A	B	C
<u>90F10160</u>	10.0	10.0	8.0



E-CAP Spacer p.5

Material: Nylon66
Flame class: 94V-2
Color: Natural

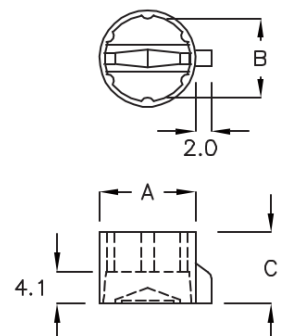
Part No.	A	B	C
ECS-002	Ø11.0	Ø10.0	10.0



E-CAP Spacer p.5 enlarge to p.10

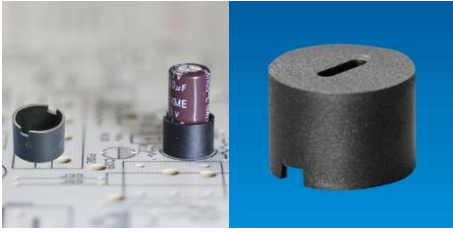
Material: PP
Color: Natural

Part No.	A	B	C
ECS-003	Ø12.5	Ø10.2	9.2



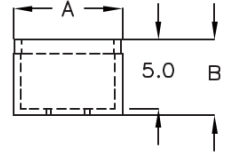
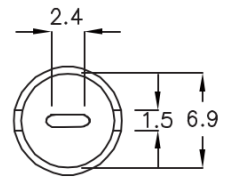
Capacitor Spacer

E-CAP Spacer p.2



Material: Nylon66
Flame class: 94V-0
Color: Black

Part No.	A	B
ECS-004	Ø7.9	5.5

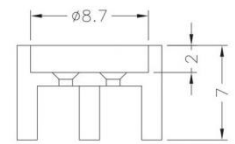
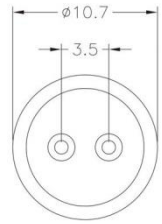


E-CAP Spacer p.3.5

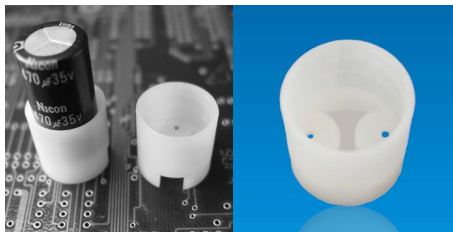


Material: Nylon66
Flame class: 94V-0/ 94V-2
Color: Natural/ Black

Part No.
ECS-005

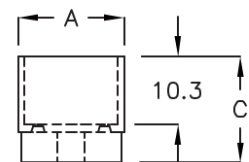
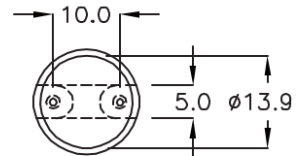


E-CAP Spacer p.10



Material: Nylon66
Flame class: 94V-2
Color: Natural

Part No.	A	C
ECS-006	Ø16.0	16.0

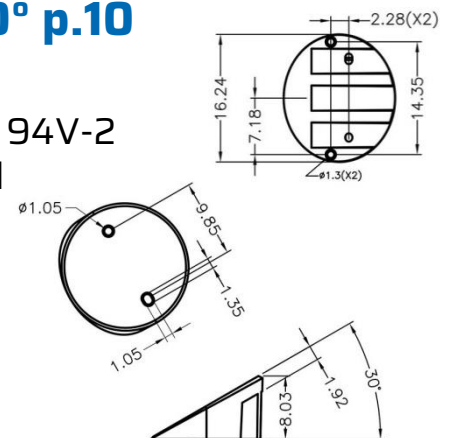


E-CAP Spacer 30° p.10



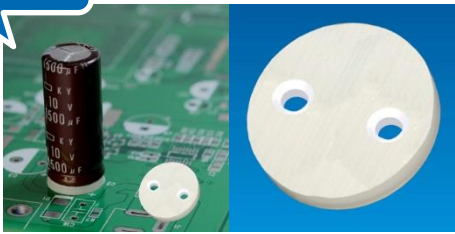
Material: Nylon66
Flame class: 94V-0/ 94V-2
Color: Black/ Natural

Part No.
ECS-007



Capacitor Washer

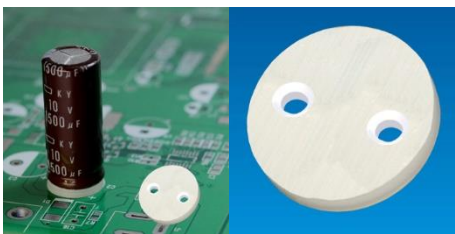
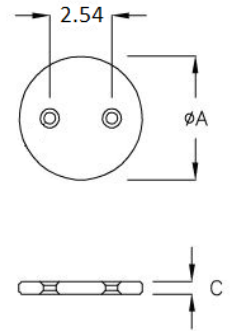
NEW
2020



E-CAP Washer p.2.54

Material: Nylon66
Flame class: 94V-2
Color: Natural

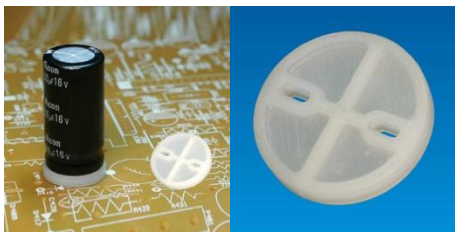
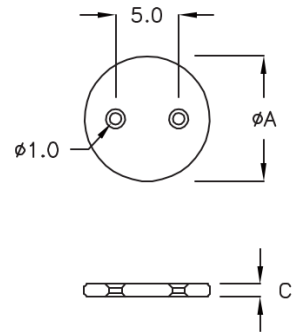
Part No.	A	C
ECW-013	∅5.0	1.0



E-CAP Washer p.5

Material: Nylon66
Flame class: 94V-2
Color: Natural

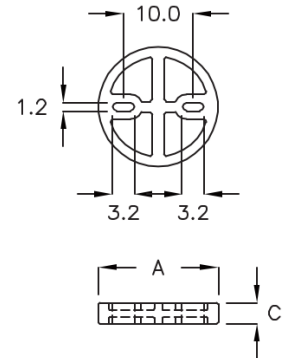
Part No.	A	C
ECW-001	∅10.0	1.0



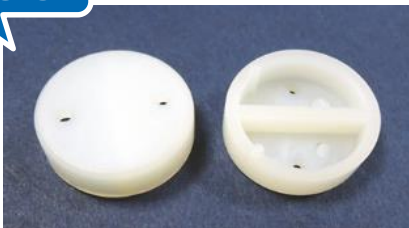
E-CAP Washer p.10

Material: Nylon66
Flame class: 94V-2
Color: Natural

Part No.	A	C
ECW-002	∅17.2	3.0



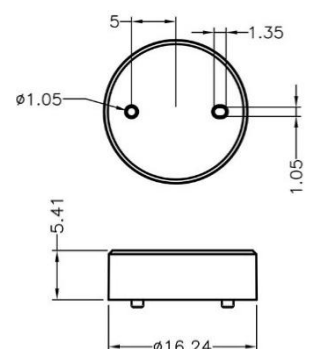
NEW
2020



E-CAP Washer p.10

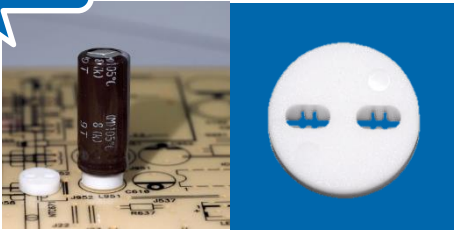
Material: Nylon66
Flame class: 94V-0/ 94V-2
Color: Natural/ Black

Part No.	A	C
ECW-02A	∅16.24	5.41



Capacitor Washer

NEW
2023

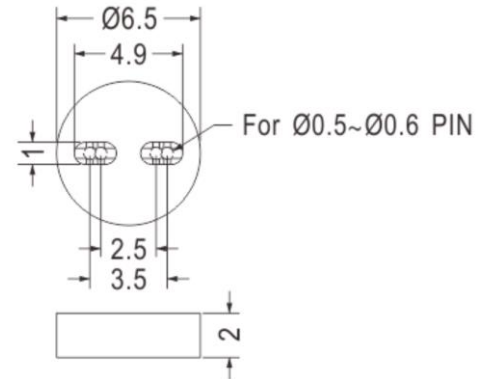


E-CAP Washer p.2.5 & 3.5

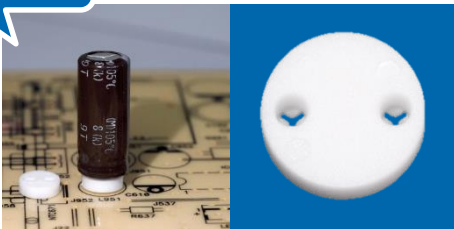
Material: Nylon66
Flame class: 94V-0/ 94V-2
Color: Black/ Natural

Part No.

ECW-014



NEW
2023

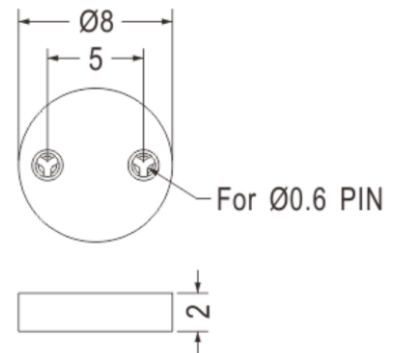


E-CAP Washer p.5

Material: Nylon66
Flame class: 94V-0/ 94V-2
Color: Black/ Natural

Part No.

ECW-015

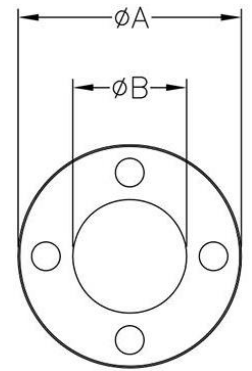


Capacitor Washer

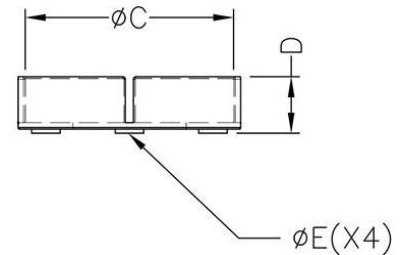


E-CAP Washer Ø18 ~ 30

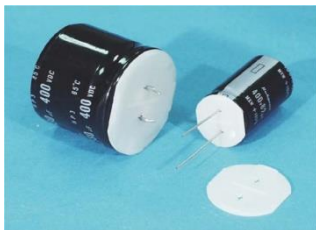
Material: Nylon66
 Flame class: 94V-0
 Color: Black/ Natural



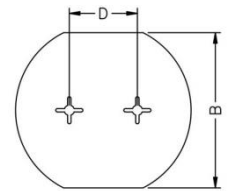
Part No.	A	B	C	D	E
ECW-005	Ø18.3	Ø8.9	Ø16.6	6.9	2.7
ECW-012	Ø12.3	Ø6.4	Ø10.6	6.9	2.5
ECW-006	Ø20.3	Ø8.9	Ø18.6	6.9	2.7
ECW-007	Ø27.3	Ø13.9	Ø25.6	6.9	3.5
ECW-008	Ø32.3	Ø16.4	Ø30.5	6.9	3.5



E-CAP Washer Ø25.4



Material: Nylon66
 Flame class: 94V-0/ 94V-2
 Color: Black/ Natural



Part No.	A	B	C	D
<u>90F10132</u>	Ø25.7	23.0	0.8	10.0

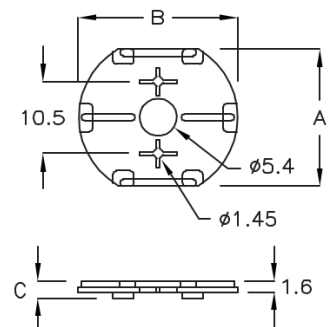


E-CAP Washer p.10

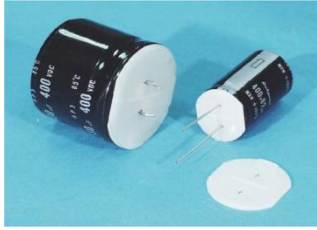


Material: Nylon66
 Flame class: 94V-2
 Color: Natural

Part No.	A	B	C
ECW-003	20.0	Ø23.0	2.6



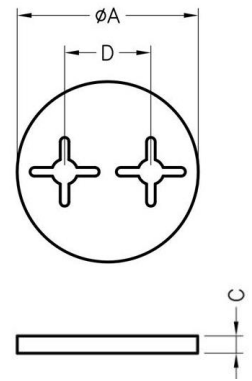
Capacitor Washer



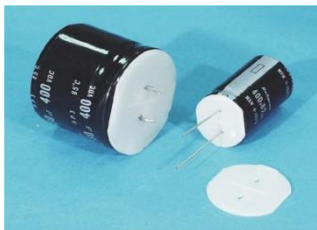
E-CAP Washer p.5

Material: Nylon66
 Flame class: 94V-0
 Color: Black/ Natural

Part No.	A	C	D
ECW-010	Ø10.5	1.0	5.0

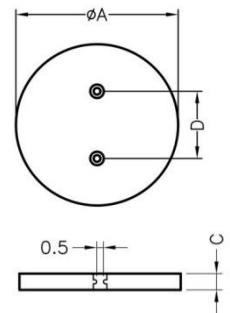


E-CAP Washer p.5

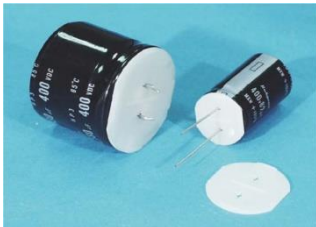


Material: Nylon66
 Flame class: 94V-0/ 94V-2
 Color: Black/ Natural

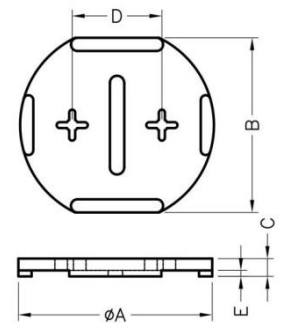
Part No.	A	C	D
ECW-011	Ø12.0	1.2	5.0



E-CAP Washer p.7.5 ~ 10



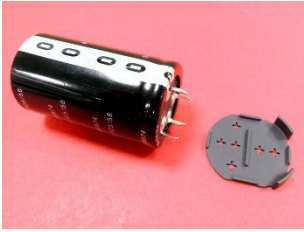
Material: Nylon66
 Flame class: 94V-0/ 94V-2
 Color: Natural/ Black



Part No.	A	B	C	D	E
ECW-012A	16.2	14.6	1.5	7.5	0.5
<u>90F10093</u>	18.2	16.4	1.5	7.5	1.0
<u>90F10152</u>	22.2	20.0	1.5	10.0	0.5
<u>90F10150</u>	25.7	23.0	1.5	10.0	0.5
<u>90F10151</u>	30.3	27.2	1.5	10.0	0.5
<u>90F10108</u>	35.3	31.8	1.5	10.0	0.5
<u>90F10109</u>	35.3	31.8	2.0	10.0	1.0

Capacitor Washer

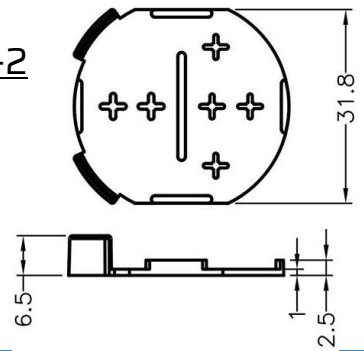
E-CAP Washer Multipin Ø35



Material: Nylon66
Flame class: 94V-0/ 94V-2
Color: Natural/ Black

Part No.

90F10153



**NEW
2021**

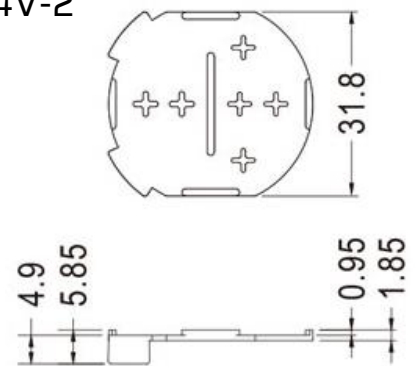


E-CAP Washer Multipin Ø35

Material: Nylon66
Flame class: 94V-0/ 94V-2
Color: Natural/ Black

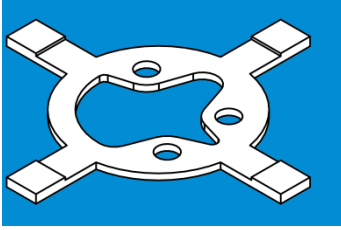
Part No.

ECW-013



Capacitor Washer

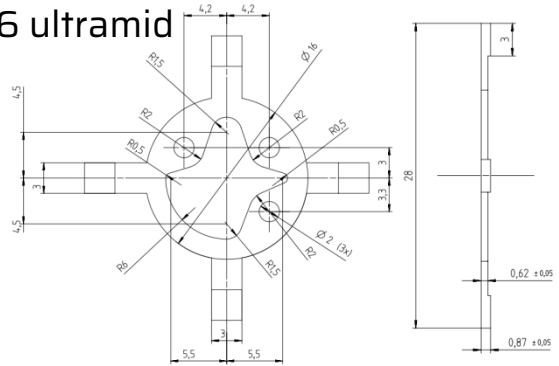
E-CAP Washer 3 Pin Ø30



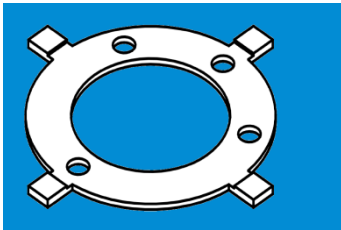
Material: PA6.6 ultramid
Color: Black

Part No.

90F10164



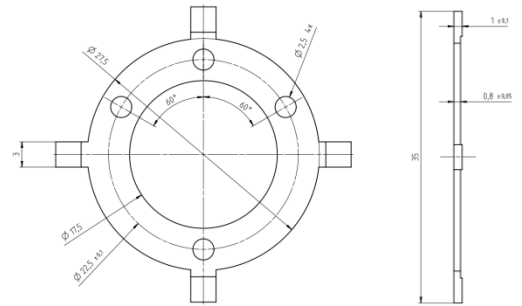
E-CAP Washer 4 Pin Ø35



Material: PA6.6 ultramid
Color: Black

Part No.

90F10179



E-CAP Stepwasher p.3.5



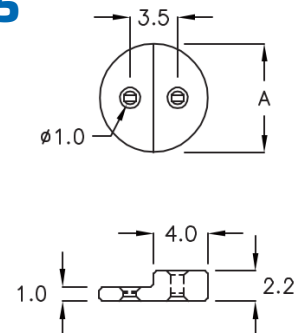
Material: Nylon66 + GF30%
Flame class: 94V-0
Color: Black

Part No.

ECW-004

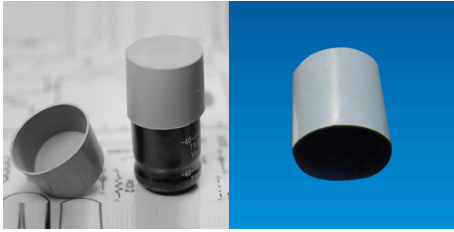
A

Ø8.0



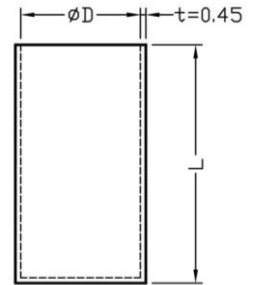
Capacitor Insulation

E-CAP Insulation Ø6.3 ~ 18



Material: Silicone (UL)
 Flame class: 94HB/ 94V-0
 Color: Gray

Part No.	D	L
ECC-001	Ø7.8	26.0
ECC-002	Ø13.2	15.0
<u>90F10147</u>	Ø16.7	15.0
<u>90F10146</u>	Ø18.5	25.0

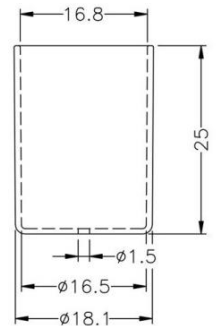


E-CAP Insulation Ø16 with hole

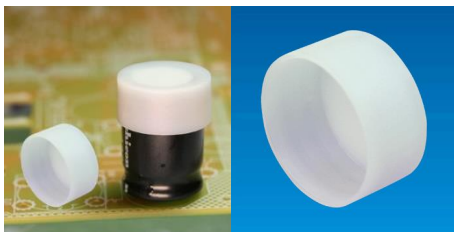


Material: Nylon66
 Flame class: 94V-0/ 94V-2
 Color: Black/ Natural

Part No.	D	L	C
ECC-003	Ø16.5	25	0.8

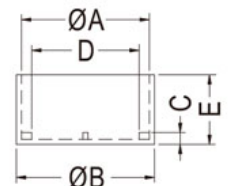
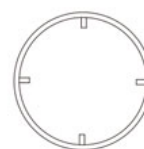


E-CAP Insulation Ø12.5 ~ 18



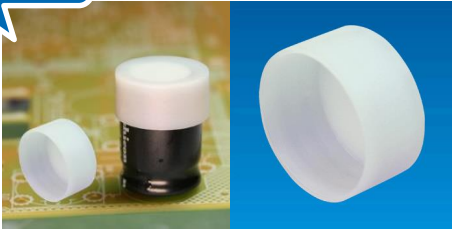
Material: Nylon66
 Flame class: 94V-0/ 94V-2
 Color: Natural

Part No.	UL	A	B	C	D	E
ECC-030						
ECC-026		Ø13.2	Ø14.2	2.5	10.2	15.0
ECC-027		Ø16.5	Ø17.5	1.5	12.4	20.0
ECC-004		Ø16.7	Ø18.2	1.75	13.7	10.2
90F10183	V-0	Ø18.7	Ø20.2	1.75	15.7	10.2
90F10184	V-2	Ø18.7	Ø20.2	1.75	15.7	10.2



Capacitor Insulation

NEW
2023



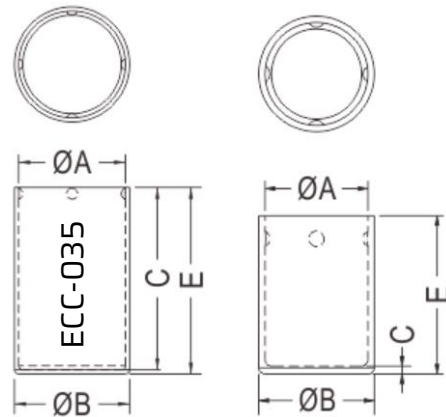
E-CAP Insulation Ø6.3 ~ 10

Material: Nylon66

Flame class: 94V-0/ 94V-2

Color: Black/ Natural

Part No.	A	B	C	E
ECC-031	Ø6.5	Ø7.3	0.5	10.0
ECC-032	Ø6.5	Ø7.3	0.4	12.0
ECC-033	Ø8.2	Ø9.0	0.5	10.0
ECC-034	Ø8.2	Ø9.0	0.4	13.4
ECC-035	Ø10.3	Ø11.1	0.4	18.0



NEW
2023



E-CAP Insulation Ø10 & Ø18 with hole

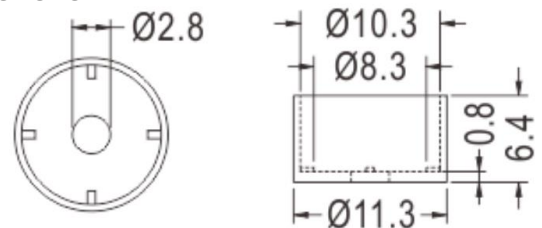
Material: Nylon66

Flame class: 94V-0/ 94V-2

Color: Black/ Natural

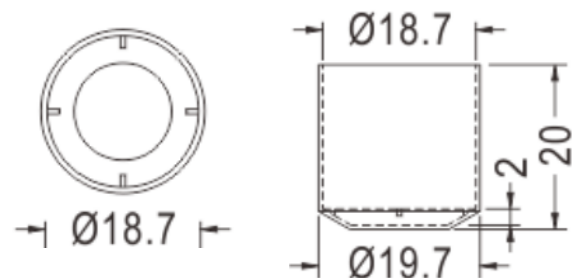
Part No.

ECC-036



Part No.

ECC-037



Capacitor Insulation

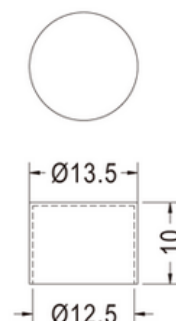
NEW
2021



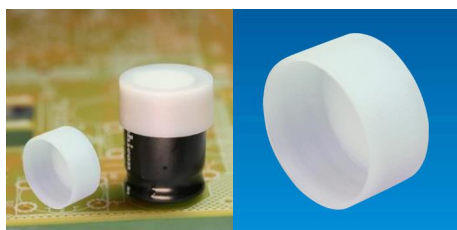
E-CAP Insulation Ø12.5

Material: Silicone (UL)
Flame class: 94V-0
Color: Black

Part No.	oD	iD	L
ECC-028	Ø13.5	Ø12.5	10.0

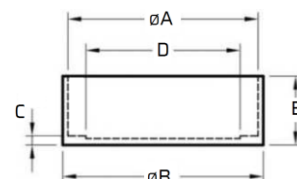


E-CAP Insulation Ø22 ~ 25



Material: Nylon66
Flame class: 94V-0/ 94V-2
Color: Natural

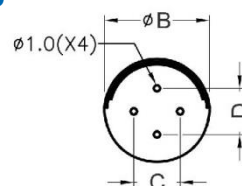
Part No.	UL	A	B	C	D	E
ECC-006		Ø22.0	Ø23.4	1.05	18.0	8.0
90F10161	V-0	Ø26.0	Ø27.2	0.75	22.0	8.0
ECC-025		Ø27.0	Ø28.2	1.05	23.0	15.0



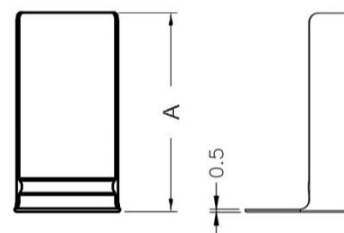
E-CAP Insulation Ø10 & 16



Material: Nylon66
Flame class: 94V-0/ 94V-2
Color: Natural/ Black



Part No.	A	B	C	D
ECC-007	24.5	11.2	5.0	5.0
<u>90F10112</u>	31.8	16.5	7.4	7.4



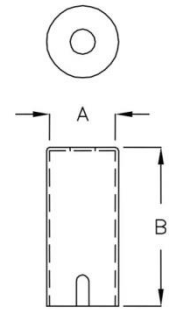
Capacitor Insulation

E-CAP Tube Ø10



Material: PP
Flame class: 94V-0
Color: Black

Part No.	A	B
ECC-009	Ø10.5	27.5
ECC-019	Ø13.0	50.8

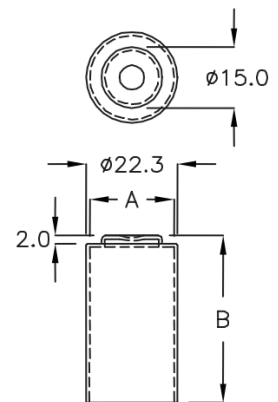


E-CAP Tube Ø20



Material: Nylon66
Flame class: 94V-2
Color: Black

Part No.	A	B
ECC-010	Ø20.5	40.9

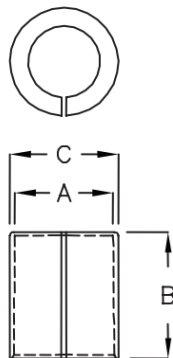


E-CAP Tube Ø12



Color: Black

Part No.	Material	A	B	C
ECC-011	PP V-0	Ø12.5	16.0	Ø13.6
ECC-023	N66 V-2	Ø24.0	20.0	Ø25.0

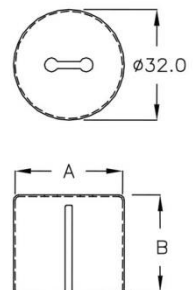


E-CAP Tube Ø30

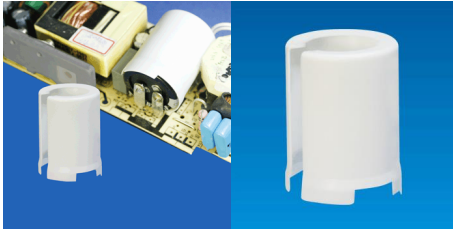


Material: PP
Flame class: 94V-0
Color: Black

Part No.	A	B
ECC-012	Ø31.0	28.0
ECC-020	Ø31.5	46.5



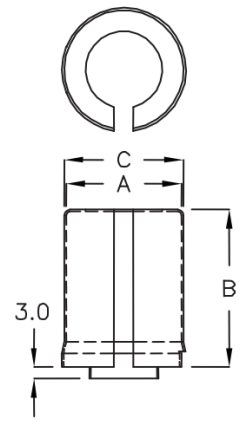
Capacitor Insulation



E-CAP Tube Ø30 H41

Material: Nylon66
Flame class: 94V-0
Color: Black/ White

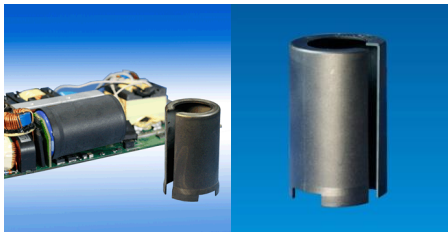
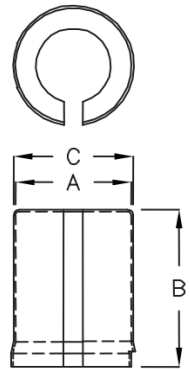
Part No.	A	B	C
ECC-013	Ø30.0	41.0	Ø31.0



E-CAP Tube Ø30 H51

Material: Nylon66
Flame class: 94V-0
Color: Black/ White

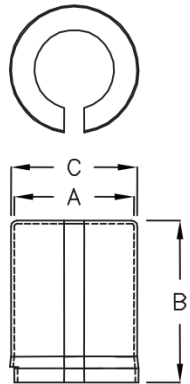
Part No.	A	B	C
ECC-014	Ø30.0	51.0	Ø31.0



E-CAP Tube Ø30 H50

Material: PP
Flame class: 94V-0
Color: Black

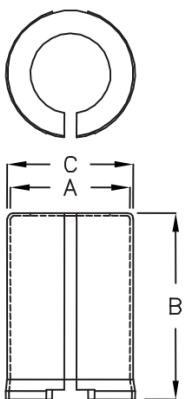
Part No.	A	B	C
ECC-015	Ø30.0	51.0	Ø31.6



E-CAP Tube Ø30 H55

Material: PP
Flame class: 94V-0
Color: Black

Part No.	A	B	C
ECC-016	Ø30.0	55.5	Ø31.6



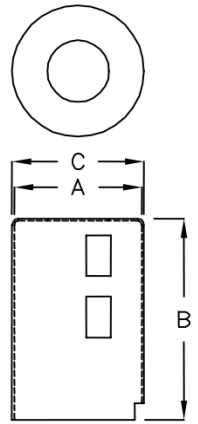
Capacitor Insulation



E-CAP Tube Ø30 H49

Material: PP
Flame class: 94V-0
Color: Black

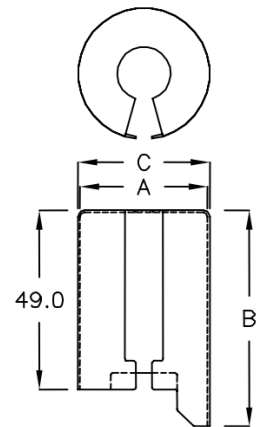
Part No.	A	B	C
ECC-017	Ø31.0	49.0	Ø32.0



E-CAP Tube Ø30 H58

Material: PP
Flame class: 94V-0
Color: Black

Part No.	A	B	C
ECC-018	Ø31.0	58.0	Ø32.0



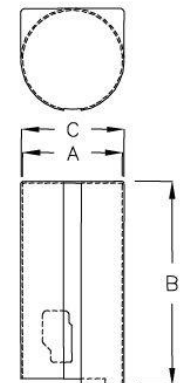
NEW
2020



E-CAP Tube Ø30 H75.8

Material: PP
Flame class: 94V-0
Color: Natural

Part No.	A	B	C
ECC-021	Ø31.0	75.8	32.0



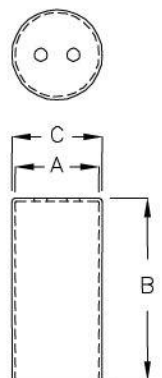
NEW
2020



E-CAP Tube Ø13 H30.5

Material: PP
Flame class: 94V-0
Color: Black

Part No.	A	B	C
ECC-022	Ø13.0	30.5	Ø14.0



Capacitor Insulation

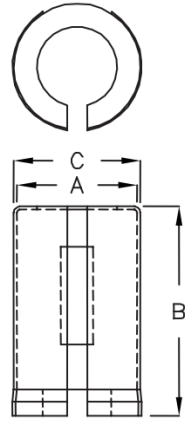
NEW
2020



E-CAP Tube Ø30 H65

Material: PP
Flame class: 94V-0
Color: Black

Part No.	A	B	C
ECC-024	Ø30.0	65.0	Ø31.6



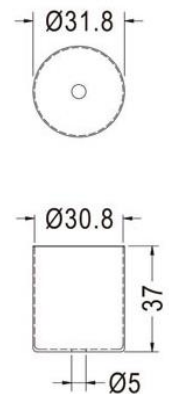
NEW
2021



E-CAP Insulation Ø30 with hole

Material: Nylon66
Flame class: 94V-0/ 94V-2
Color: Natural/ Black

Part No.	oD	iD	H
ECC-029	Ø31.8	Ø30.8	37



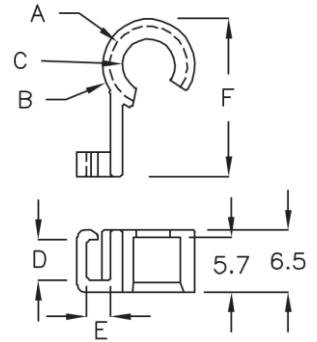
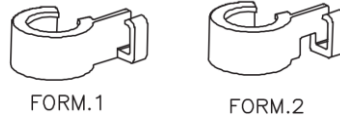
Capacitor Accessories

NEW
2020



E-CAP NTC Cable Holder Ø8 ~ 12

Material: Nylon66
Flame class: 94V-0
Color: Black



Part No.	A	B	C	D	E	F	FORM
ECZ-002	Ø8.1	Ø9.7	Ø5.5	4.3	2.5	16.5	1
ECZ-001	Ø10.1	Ø11.9	Ø7.7	4.3	2.5	17.6	1
ECZ-003	Ø10.1	Ø11.9	Ø7.7	4.3	2.5	17.6	2
ECZ-004	Ø12.1	Ø14.1	Ø9.7	4.3	2.5	20.7	2

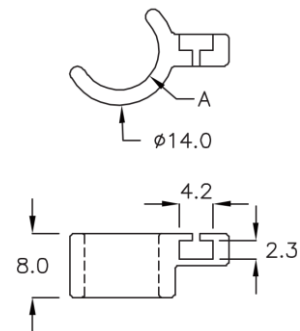
NEW
2020



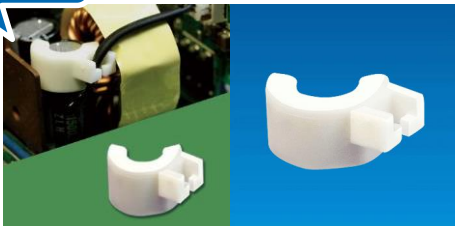
E-CAP NTC Cable Holder Ø10

Material: Nylon66
Flame class: 94V-0
Color: Natural

Part No.	A
ECZ-005	Ø10.0



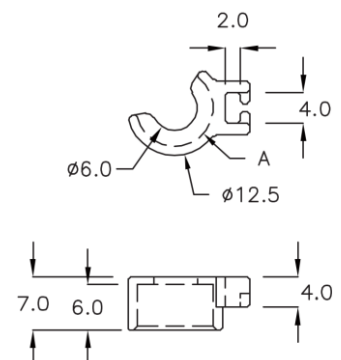
NEW
2020



E-CAP NTC Cable Holder Ø10

Material: Nylon66
Flame class: 94V-0
Color: Natural

Part No.	A
ECZ-006	Ø10.0



Capacitor Accessories

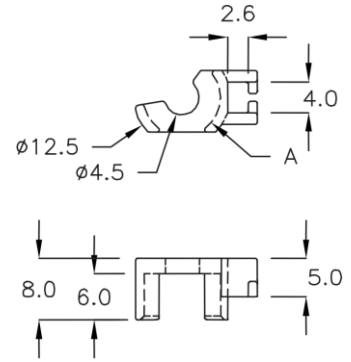
NEW
2020



E-CAP NTC Cable Holder Ø10

Material: Nylon66
Flame class: 94V-0
Color: Natural

Part No.	A
ECZ-007	Ø10.0



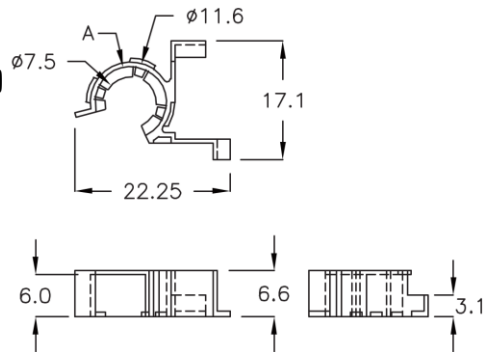
NEW
2020



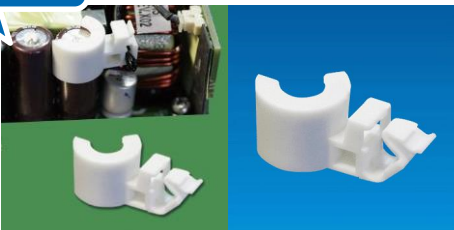
E-CAP NTC Cable Holder Ø10

Material: Nylon66
Flame class: 94V-0
Color: Black

Part No.	A
ECZ-008	Ø10.4



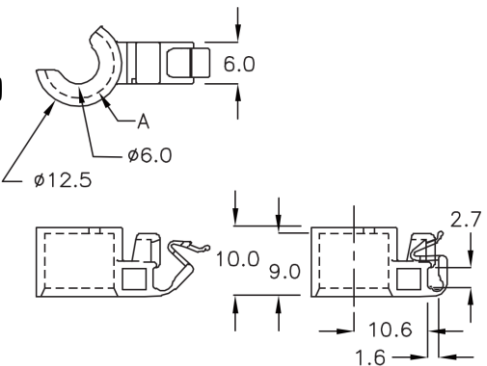
NEW
2020



E-CAP NTC Cable Holder Ø10

Material: Nylon66
Flame class: 94V-0
Color: Natural
With Lock Feature

Part No.	A
ECZ-009	Ø10.1



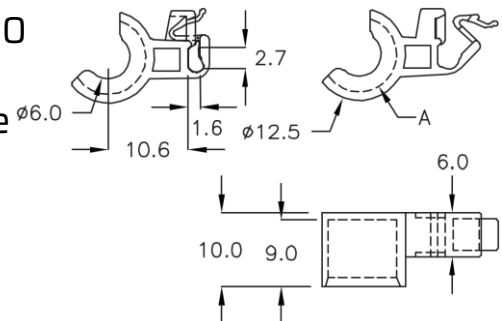
NEW
2020



E-CAP NTC Cable Holder Ø10

Material: Nylon66
Flame class: 94V-0
Color: Natural
With Lock Feature

Part No.	A
ECZ-010	Ø10.1



Capacitor Accessories

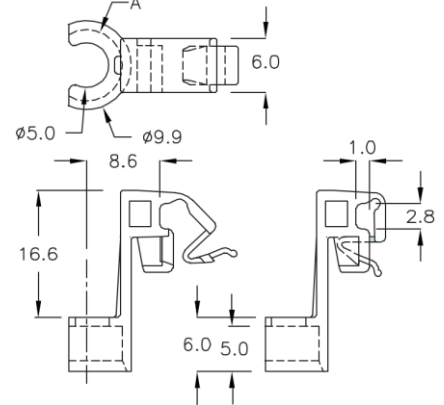
NEW
2020



E-CAP NTC Cable Holder Ø8

Material: Nylon66
Flame class: 94V-0
Color: Natural
With Lock Feature

Part No.	A
ECZ-011	Ø7.9



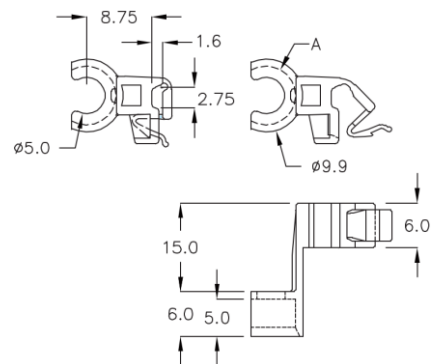
NEW
2020



E-CAP NTC Cable Holder Ø8

Material: Nylon66
Flame class: 94V-0
Color: Natural
With Lock Feature

Part No.	A
ECZ-012	Ø7.9



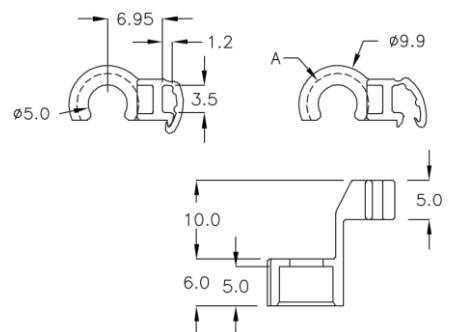
NEW
2020



E-CAP NTC Cable Holder Ø8

Material: Nylon66
Flame class: 94V-0
Color: Natural
With Lock Feature

Part No.	A
ECZ-013	Ø7.9



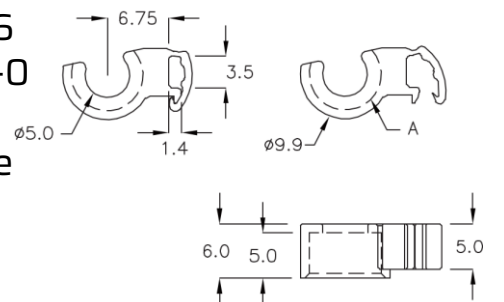
NEW
2020



E-CAP NTC Cable Holder Ø8

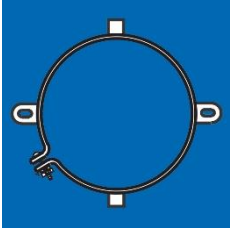
Material: Nylon66
Flame class: 94V-0
Color: Natural
With Lock Feature

Part No.	A
ECZ-014	Ø7.9

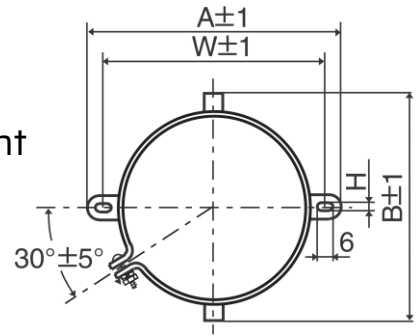


Capacitor Clamps & Nuts

E-CAP Clamp 2 Foot

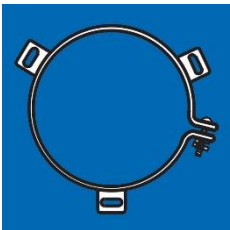


Material: Zinc with Silver trivalent chromate post treatment

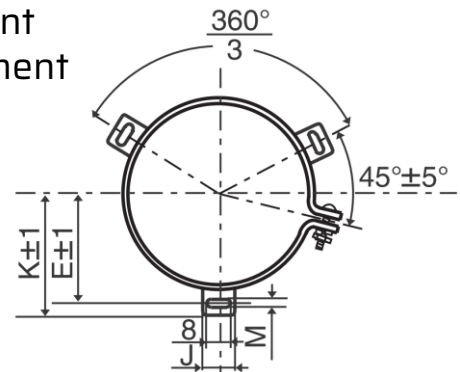


Part No.	Can Ø	A	B	W	H
124586-0035A	35.0	58.0	44.0	48.0	3.5
124586-0021A	50.8	78.0	64.0	68.0	4.5
ESC-001	63.5	90.0	76.0	80.0	4.5
124586-0025A	76.2	104.5	90.0	93.5	4.5

E-CAP Clamp 3 Foot



Material: Zinc with Silver trivalent chromate post treatment

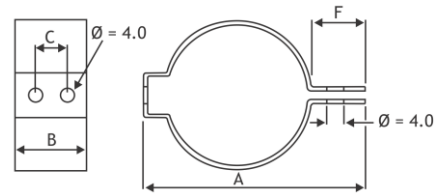
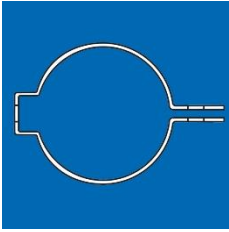


Part No.	Can Ø	E	K	M	J
124586-0036A	50.8	32.5	37.0	4.5	14.0
124586-0037A	63.5	38.1	43.5	4.5	14.0
124586-0038A	76.2	44.5	50.0	4.5	14.0
124586-0026A	89.0	50.8	56.5	4.5	16.0
ESC-002	100.0	56.5	63.4	5.5	18.0

Capacitor Clamps & Nuts

E-CAP Clamp horizontal mounting

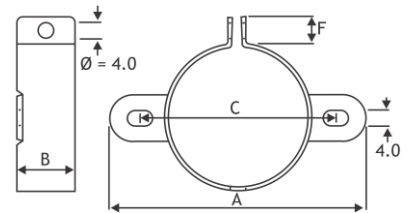
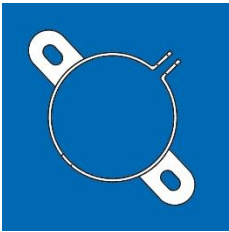
Material: Zinc plated Steel



Part No.	Can Ø	A	B	C	F
H1	25.0	40.0	22.3	12.8	10.0
H2	35.0	52.0	22.3	12.8	10.0

E-CAP Clamp 2 Foot

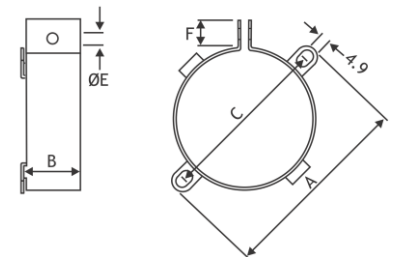
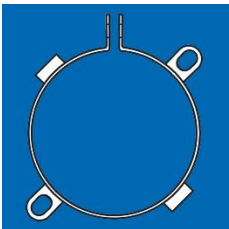
Material: Zinc plated Steel



Part No.	Can Ø	A	B	C	F
V2	25.0	49.0	19.0	37.0	10.0
V3	35.0	58.0	19.0	45.0	9.0
V9	40.0	65.0	19.0	52.4	9.5

E-CAP Clamp 2 Foot

Material: Zinc plated Steel

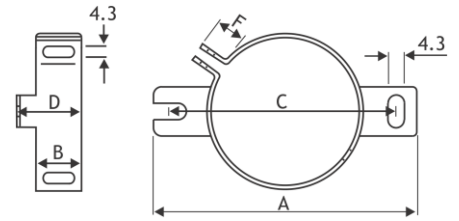
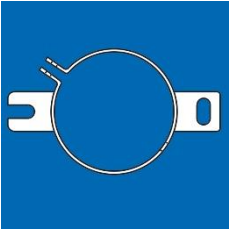


Part No.	Can Ø	A	B	C	E	F
V4	51.0	75.0	25.4	64.0	5.0	10.0
V6	45.0	69.5	17.4	58.0	4.0	10.0
V8	63.5	88.9	25.4	77.5	5.0	9.5
PYC6041	35.0	64.0	19.0	52.0	4.5	11.5

Capacitor Clamps & Nuts

E-CAP Clamp 2 Foot

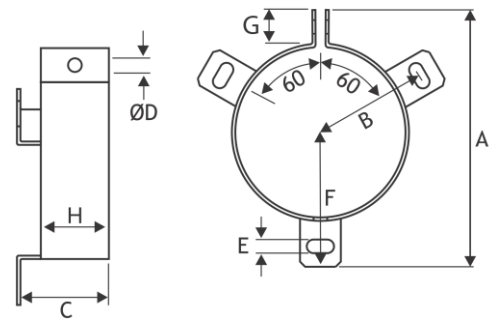
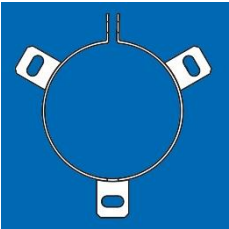
Material: Zinc plated Steel



Part No.	Can Ø	A	B	C	D	F
UTE2736	35.0	63.0	12.2	54.0	17.2	9.0

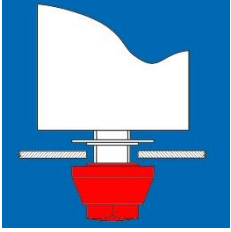
E-CAP Clamp 3 Foot

Material: Zinc plated Steel



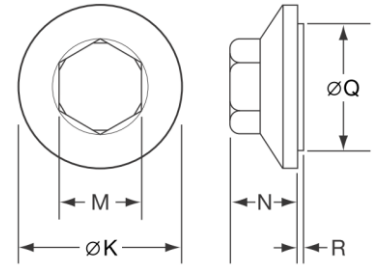
Part No.	Can Ø	A	B	C	D	E	F	G
V10	65.0	90.0	40.0	30.0	5.0	4.5	-	10.0
V11	76.0	103.0	45.5	30.0	5.0	4.5	-	10.0
V90	90.0	116.0	53.5	30.0	5.0	4.5	-	10.0
UTE2737	50.0	76.5	33.5	27.0	4.3	4.3	39.5	10.0
UTE2738	65.0	88.5	39.0	27.0	4.3	4.3	45.0	10.0
UTE2739	72.0	97.0	44.0	28.0	4.3	4.3	50.0	10.0
PYC6042	50.0	78.0	32.5	30.0	5.5	4.5	39.0	12.0
PYC6043	65.0	90.5	38.0	36.0	5.5	4.5	44.0	12.0
PYC6044	75.0	100.5	43.0	36.0	5.5	4.5	49.0	12.0
PYC6045	90.0	115.5	50.5	36.0	5.5	4.5	56.5	12.0

Capacitor Clamps & Nuts



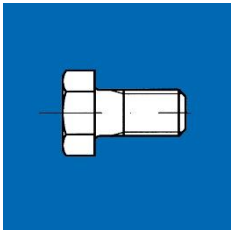
E-CAP Hex Nut

Material: Nylon
Color: Natural



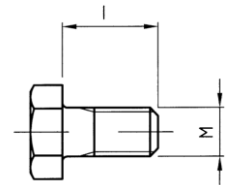
Part No.	Thread	ØK	M	N	ØQ	R
PYB7033	M8	25.0	17.0	14.0	17.0	1.00
PYB7026	M12	30.0	19.0	16.5	27.0	1.00
50-8B*	M12	30.0	19.0	16.5	22.0	1.50
PYB7041	M12	30.0	19.0	16.0	22.0	1.45
50-8D	M12	30.0	19.0	18.0	22.0	1.40
PYB7042	M12	38.0	19.0	16.5	30.0	1.45
50-8E	M12	38.0	19.0	18.0	30.0	1.40

* incl. Washer ØA 24.0; ØI 13.0

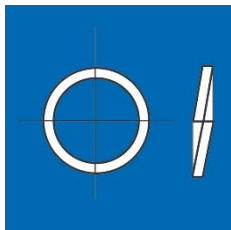


E-CAP Screw

Material: Stainless Steel

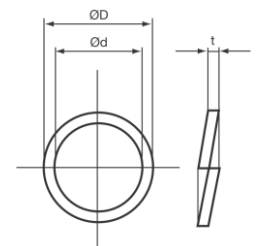


Part No.	Thread	L
PYC6750	M5	10
PYC6751	M6	12



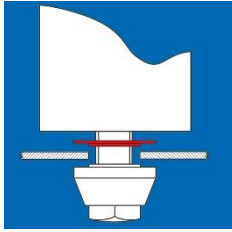
E-CAP Washer

Material: Stainless Steel



Part No.	ØD	Ød	t
PYC7150	8.7	5.1	1.2
PYC6756	11.1	6.1	1.6

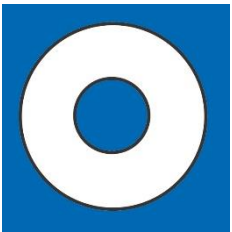
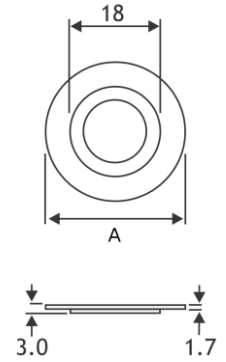
Capacitor Clamps & Nuts



E-CAP Stepped Poly Washer

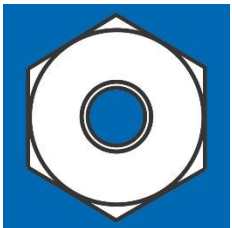
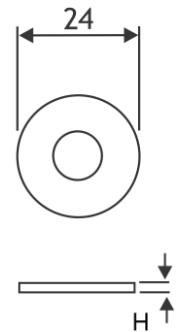
Color: Black

Part No.	Version	A
2772	M8	25.0
2773	M12	30.0



E-CAP Plain Poly Washer

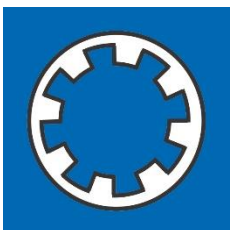
Part No.	Version	H
2778	M8	2.0
2779	M12	2.5



E-CAP Nut

Material: Steel

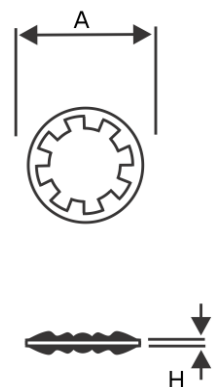
Part No.	Threat	SW	H
2789	M8	13.0	6.5
2788	M12	19.0	7.0



E-CAP Washer

Material: Steel

Part No.	Version	A	H
2352	M8	14.0	0.8
2353	M12	21.0	1.0



UL94 Classifications

	Horizontal Test		Vertical Test		
Classification	HB		V-0	V-1	V-2
Number of Specimen	3	3	5	5	5
Thickness of Specimen	< 3mm	3 to 13mm	up to max.13mm		
1st Flame Application	30sec.	30sec.	10sec.	10sec.	10sec.
2nd Flame Application	--	--	10sec.	10sec.	10sec.
Burning Rate	max. 75mm/ min	max. 40mm/ min	--	--	--
Afterflame time after 1st flame application for each individual specimen	--	--	max. 10sec.	max. 30sec.	max. 30sec.
Afterflame time after 2nd flame application for each individual specimen	--	--	max. 30sec.	max. 60sec.	max. 60sec.
Total afterflame time for all 5 specimen after 1st and 2nd flame application	--	--	max. 50sec.	max. 250sec.	max. 250sec.
Total afterflame or afterglow of any specimen up to its end allowed	Yes	Yes	No	No	No
Cotton indicator ignited by flaming particles or drops allowed	--	--	No	No	Yes

HEADQUARTER

wittig ELECTRONIC GmbH

Gewerbegebiet Süd 5
09618 Brand-Erbisdorf
GERMANY

☎ +49 (0) 37322 5280-0
✉ info@wittig-electronic.de
🌐 www.wittig-electronic.de

SUBSIDIARY SOUTH-EAST-EUROPE

wittig ELECTRONIC s.r.o.

Průmyslová 2151/4
68001 Boskovice
CZECH REPUBLIC

☎ +420 515 550-805
✉ wittig@wittig-electronic.cz
🌐 www.wittig-electronic.cz

TaylorMade
Solutions
are welcome!